

# TABLE OF CONTENTS

---

## **Rotors**

PGJ-00: Gear-Driven Sprinkler .....	1
PGJ-04, 06, 12: Gear-Driven Sprinklers .....	2
SRM-04, PGM-04, 06, 12: Gear-Driven Sprinklers .....	3
PGP®: Gear-Driven Sprinkler .....	4
PGP-ATR: Gear-Driven Sprinkler .....	5
PGP-00: Gear-Driven Sprinkler .....	6
PGP-04 Ultra, PGP-12 CV Ultra: Gear-Driven Sprinklers .....	7
I-20-00: Gear-Driven Sprinklers .....	8
I-20-04, I-20-06, 1-20-12: Gear-Driven Sprinklers .....	9
I-25-04, 06: Gear-Driven Sprinklers .....	10
I-40-04, 06: Gear-Driven Sprinklers .....	11
I-60: Gear-Driven Sprinklers .....	12
I-90: Gear-Driven Sprinkler .....	13
ST-90: Gear-Driven Sprinkler .....	14
STG-900: Gear-Driven Sprinkler .....	15
ST-1600B: Pop-Up .....	16
ST-1600 Gear-Drive: B and BR Models .....	17
ST-1600 Gear-Drive: B and BR Models .....	18

## **Sprays**

PSU-02, 04, 06: PS Ultra Spray Sprinklers .....	19
PROS-02, 03, 04, 06, 12: Pro-Spray® Sprinklers .....	20
PRS30-04, 06, 12: Pro-Spray® Pressure Regulated Spray Bodies .....	21
PRS40-04CV, 06CV, 12CV: Pro-Spray® Pressure Regulated Spray Bodies .....	22

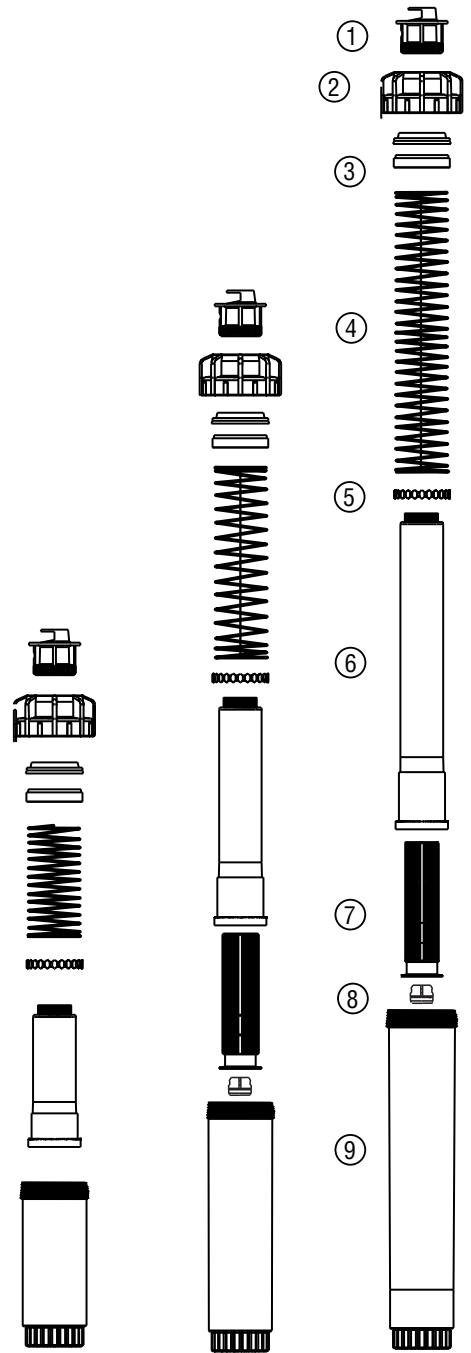
## **Valves**

SRV: Plastic Valve .....	23
PGV-ASV: Plastic Valve (6-Bolt Bonnet Design) .....	24
PRO-ASV: Plastic Valve .....	25
PGV-100G/101G: Plastic Valves .....	26
PGV Jar-Top: Plastic Valve .....	27
PGV-100A/101A: Plastic Valves .....	28
PGV-151G, 201G: Plastic Valves .....	29
HPV: Plastic Valve .....	30
ICV-101G, 151G, 201G: Plastic Valves .....	31
ICV-301: Plastic Valve .....	32
IBV-101G, 151G, 201G: Brass Valves .....	33
IBV-301G: Brass Valves .....	34
HBV: Brass Valve .....	35
HBV: Brass Valve .....	36
HQ3RC: Quick Coupler Valve .....	37
HQ33RC, HQ33LRC, HQ33LRCR: Quick Coupler Valve .....	38
HQ44RC, HQ44LRC, HQ44LRCR: Quick Coupler Valve .....	39
HQ44RCAW, HQ44LRCAW, HQ44LRCAWR: Quick Coupler Valve .....	40

HQ5RC, HQ5LRC, HQ5LRCR: Quick Coupler Valve .....	41
ICZ-101: Drip Control Zone Kit.. .....	42
ICZ-151: Drip Zone Kit .. .....	43
PCZ-101: Drip Zone Control Kit .. .....	44
ACZ-075: Drip Control Zone Kit.. .....	47
<b>Controllers</b>	
XC Controller: Residential Controller .. .....	48
XC Hybrid Controller: Residential Controller (Battery Operated).. .....	49
XC Hybrid Controller: Residential Controller (Stainless Steel).. .....	50
Pro-C®: Indoor and Outdoor Controller.. .....	51
PCC: Indoor and Outdoor Controllers .. .....	52
ICC: Institutional/Commercial Controller (ICC-800PL & ICC-801PL) – Plastic Cabinet. ....	53
ICC: Institutional/Commercial Controller (ICC-800M & ICC-800SS) – Metal Cabinet.. .....	54
ICC Plastic Pedestal .. .....	55
I-Core®: Institutional/Commercial Controller (IC-600PL & IC601PL) – Plastic Cabinet .. .....	56
I-Core: Institutional/Commercial Controller (IC-800M & IC-800SS) – Metal Cabinet.. .....	57
I-Core Plastic Pedestal .. .....	58
IMMS®-CCC: Irrigation Management and Monitoring .. .....	59
IMMS-SI: Irrigation Management and Monitoring System .. .....	60
IMMS-CI: Irrigation Management and Monitoring System .. .....	61
ACC Wall Mount Controllers (ACC1200, ACC99D) .. .....	62
ACC Pedestal Controllers (ACC1200PP, AGC1200PP, AGC99DPP).. .....	63
ICD-HP Components .. .....	64
Steel Controller Enclosure Parts (IDSSP, IDSSW) .. .....	65
Plastic Pedestal Kits IDS-PP .. .....	66
Plastic Wall Enclosure Kits IDS-PW .. .....	67
IDS Decoder Controller Components .. .....	68
ET Systems.. .....	69
ICR: Remote Control Unit .. .....	70
ROAM: Remote Control Unit .. .....	71
ROAM XL: Remote Control Unit .. .....	72
SVC & WVC Controllers .. .....	73
NODE Controllers .. .....	74
PSR-22, PSR-52, PSR-53: Pump Start Relays .. .....	75
PSR-B: Pump Start Relay Booster .. .....	76
Mini-Clik®: Rain Sensor .. .....	77
WRC & WRFC: Wireless Rain Sensors .. .....	78
Rain-Clik®: Rain Sensor .. .....	79
Solar Sync® and Wireless Solar Sync: ET Sensor .. .....	80
Accessories.. .....	81
Notes .. .....	83

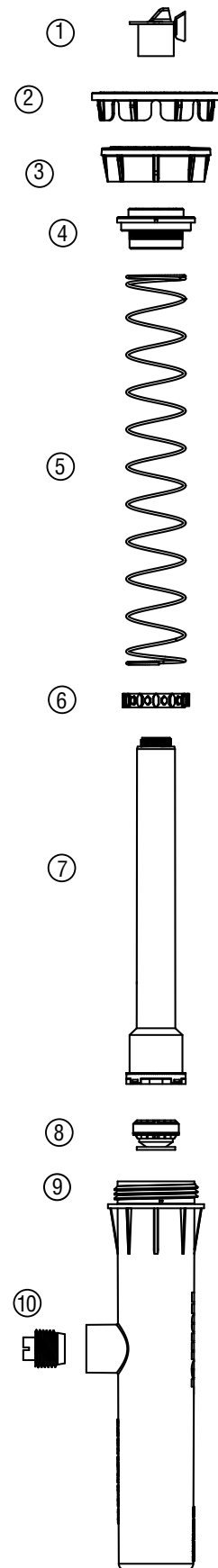
# PSU-02, 04, 06: PS Ultra Spray Sprinklers

Item	Description	Catalog No.	
①	Flush Cap ( <i>White</i> )	162800	
②	Body Cap   Standard ( <i>Black</i> )	162600	
③	Spring Seat	181100	
④	Spring	2"	180200
		4"	192100
		6"	162400
⑤	Ratchet Ring	162700	
⑥	Riser	2"	162300
		4"	162500
		6"	163100
⑦	Filter Screen (4" and 6" models only)	162900	
⑧	Check Valve Assembly ( <i>Bag of 25</i> )	462237	
⑨	Body	2" Pop-up Body	179900
		4" Pop-up Body	192000
		6" Pop-up Body	163200



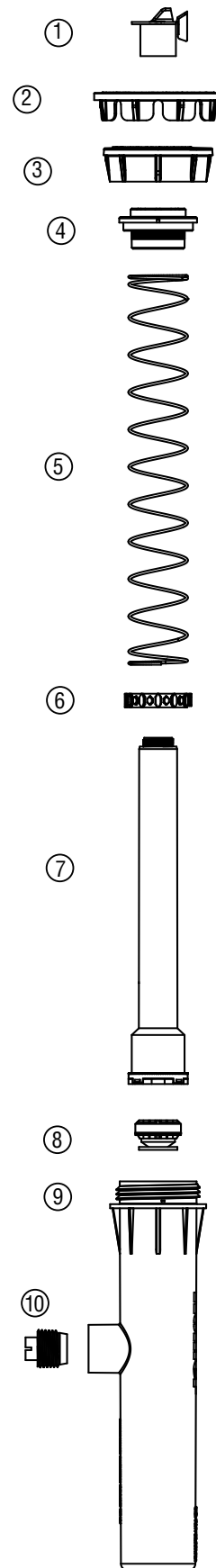
# PROS-02, 03, 04, 06, 12: Pro-Spray® Sprinklers

Item	Description	Catalog No.
①	Flush Cap (Gray)	423900
②	Snap-On Reclaimed Cap	Purple PROSRCCAP
③	Body Cap	Standard (Black) 458500
		With Check Valve ID (Black) 458505
		Reclaimed Body Cap (Purple) 458520
		Reclaimed w/ Check Valve ID (Purple) 458525
④	Riser Seal	472300
⑤	Spring	2" 630900
		3" 631000
		4" 459500
		6" 460400
		12" 460500
⑥	Ratchet Ring	629300
⑦	Riser	2" 630300
		3" 630400
		4" 424100
		6" 458700
		12" 458900
⑧	Check Valve Assembly	437400
⑨	Body	2" w/o Side Inlet 630500
		3" w/o Side Inlet 630600
		4" w/o Side Inlet 424000
		6" w/ Side Inlet 458800
		6" w/o Side Inlet 645700
		12" w/ Side Inlet 459000
		12" w/o Side Inlet 645800
⑩	Side Plug (6" and 12" models only)	460600



# PRS30-04, 06, 12: Pro-Spray® Pressure Regulated Spray Bodies

Item	Description	Catalog No.	
①	Flush Cap ( <i>Blue</i> )	423905	
②	Snap-On Reclaimed Cap	PROSRCCAP	
③	Body Cap	Standard (Brown)	458551
		With Check Valve ID (Brown)	458554
		Reclaimed Body Cap w/ Check Valve ID (Purple)	458560
④	Riser Seal	472300	
⑤	Spring	4"	459600
		6"	460400
		12"	460500
⑥	Ratchet Ring	629300	
⑦	Riser	4"	437505
		6"	459105
		12"	462205
⑧	Check Valve Assembly	437400	
⑨	Body	4" w/o Side Inlet	424000
		6" w/ Side Inlet	458800
		6" w/o Side Inlet	645700
		12" w/ Side Inlet	459000
		12" w/o Side Inlet	645800
⑩	Side Plug (6" and 12" models only)	460600	



# PRS40-04CV, 06CV, 12CV: Pro-Spray® Pressure Regulated Spray Bodies

Item	Description	Catalog No.	
①	Flush Cap ( <i>Blue</i> )	423905	
②	Snap-On Reclaimed Cap	Purple PROSRCCAP	
③	Body Cap	Standard (Gray) w/Check Valve ID	458556
		Reclaimed w/ Check Valve ID (Purple)	458562
④	Riser Seal	472300	
⑤	Spring	4"	459600
		6"	460400
		12"	460500
⑥	Ratchet Ring	629300	
⑦	Riser	4"	437520
		6"	459120
		12"	462220
⑧	Check Valve Assembly	437400	
⑨	Body	4" w/o Side Inlet	424000
		6" w/o Side Inlet	645700
		12" w/o Side Inlet	645800

