

HIPP Endoskop Service GmbH

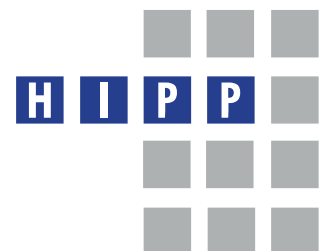
>> *your requirements are our aims.*



HIPP Accessories

Image Processing

MADE IN GERMANY



HIPP Borescopes

>> *for industrial application.*



■ Our vision – giving the gift of time to our customers

The optimum orientation towards our customers with their needs and requirements constitutes a constant challenge for us to make a small but valuable contribution in facilitating their daily routine. Due to a service portfolio tailored to suit the specific needs of the market and compatibility with other well-known borescope manufacturers, HIPP has evolved into one of the leading companies in the field of industrial endoscopy. We might not be a leader in terms of company size or volumes of systems installed, but certainly we are a leader in manufacturing a well-selected product range of customized borescopes.

HIPP Endoskop Service GmbH was founded in July 1996 by Alexander and Frank Hipp. As integrated service providers and manufacturers we stand for traditional value structures. Our activities have always been focussed on the development, maintenance and manufacture of all types of industrial borescopes. Thanks to our extensive know-how along with the strong personal commitment of all our employees, creativity, team spirit as well as the stability and permanence of a family-owned business we guarantee the highest level of quality – “Made in Germany”.

HIPP Service – customer orientation is our benchmark

Of course, customer care and after-sales service are our first priority. Spare parts supply is guaranteed for 10 years. Short repair times in the event of damage (14 days) as well as quick and uncomplicated processing are part of our standards.

HIPP Accessories

>> *image processing.*



■ State-of-the-art HIPP Camera Systems for optimum image processing

Image processing

■ Camera Systems

■ TV Adapter



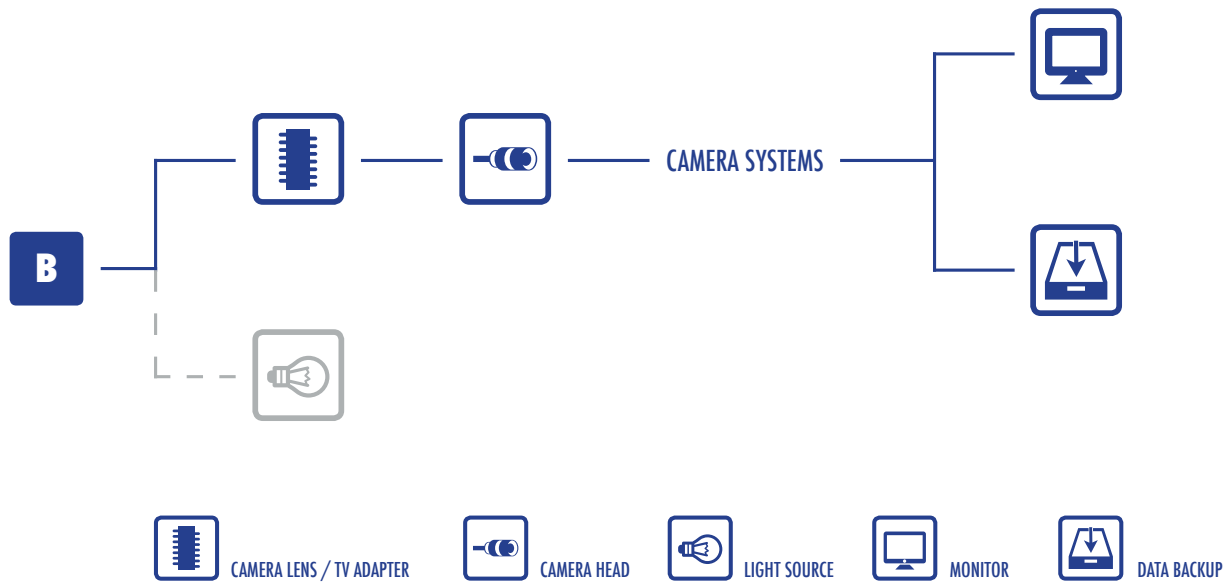
HIPP Accessories

>> modular system.



Modular System

The HIPP Accessory is compatible with various camera systems and light sources.





HIPP Compact Full HD Cam Plus

>> *digital video camera.*



Product Profile

- Easy handling (no software required)
- Suitable for shift operation
- Suitable for the most diverse production areas
- Resistant to water and oil based cooling emulsion
- Robust compact construction (case system)
- Camera system with monitor, light source, image transmission and memory module in one device
- Full HD resolution 1920 x 1080
- Image and video storage, zoom function, freeze function (all functions can be controlled from the camera head)
- High quality workmanship – „Made in China“

Properties

- Multifunctional integration
- HD Camera, HD Recording, HD Picture Playback
- Powerful LED light source
- Recording storage
- Lightweight & portable
- Synchronous secondary output
- Endoscopic mobile application
- Real-time network output
- Network real-time browsing

HIPP Compact Full HD Cam Plus

>> *digital video camera.*

Technical Specifications

Sensor:	• 1/2" CMOS Full HD
Resolution:	• 1920 x 1080 px, 60 fps
Scan:	• progressiv
Min. brightness:	• 0,01 lux
Shutter:	• automatic
W/B:	• automatic/manually
RGB/White balance:	• automatic
Video output:	• HDMI, synchron
Storage size:	• 700 x 308 x 513 mm / 15 kg
Monitor:	• 16:9
Monitor size:	• 22"
Light source:	• 60 W
Brightness:	• > 700.000 lux
Color temperature:	• 5000 - 6000 K
CRI:	• > 90
Work duration:	• > 30.000 hours
HD DVR Resolution:	• H 264, 1920 x 1080 px
Video/Image format:	• mp4 / jpeg
Functions:	• freeze / replay / snap shot / admission
Storage:	• SD Card

Digital Video Camera

Item	Item-No.
Compact Full HD Cam Plus	10-0208-01



HIPP Full HD Cam Plus

>> *digital video camera.*



Product Profile

- Easy handling (no software required)
- Suitable for shift operation
- Suitable for the most diverse production areas
- Resistant to water and oil based cooling emulsion
- Robust design, closed system, no fans installed
- Suitable for pouring
- Image resolution 1920 x1080 pixels
- Image and video storage, zoom function, freeze function (all functions can be controlled from the camera head)
- High quality workmanship - "Made in Germany"

Camera Head

Camera head with programmable push buttons (zoom, freeze)



- Weight: • 105 g
Dimensions: • d= 34 mm; l= 73 mm



HIPP Full HD Cam Plus

>> *digital video camera.*

■ Technical Specifications

Camera head:	<ul style="list-style-type: none">• aspect ratio 16:9, resolution 1/3", retractable (with the attached cap)
Power consumption:	<ul style="list-style-type: none">• 100-240 V (25 VA)
Frequency:	<ul style="list-style-type: none">• 50-60 Hz
Device protection:	<ul style="list-style-type: none">• 2 x T3, 15 A
Video system:	<ul style="list-style-type: none">• image resolution: Full HD 1920 x 1080• TV resolution: > 1000 lines• sensitivity: < 3 Lux (1/1.4)• automatic white balance, with data backup• shutter speed: 1/50 (1/60) zu 1/100.000 sec.
Storage:	<ul style="list-style-type: none">• image size: JPG 1920 x 1080• video format: FULL HD 1920 x 1080, Mpeg 4 (H.264 Codec), image rate: 60 fps
Connection:	<ul style="list-style-type: none">• USB (A)
Other connections:	<ul style="list-style-type: none">• Video-out connection: 1x HDMI/DVI, 1x Y-Pb-Pr (component), 1x video (PAL/NTSC), 1x S-video (PAL/NTSC), 2x HD SDI (opt.)• other: 1x USB (A) (USB-Tastatur), 1x remote IN (Fußtaster), 1x remote OUT (video printer, video recorder), 1x RJ45 (service)
Safety class (similar IEC 60601-1):	<ul style="list-style-type: none">• I / BF
IP-Code:	<ul style="list-style-type: none">• 20
Standard:	<ul style="list-style-type: none">• IEC 60601-1-2
Classification (similar MDD 93/42/EEC):	<ul style="list-style-type: none">• I
Properties:	<ul style="list-style-type: none">• white balance, boost-function, menu• 3 user settings storable, 2.5 digital zoom• freeze-function, character generator
Dimensions (WxHxD):	<ul style="list-style-type: none">• 355 mm x 103 mm x 253 mm
Weight:	<ul style="list-style-type: none">• ca. 4.5 kg
Delivery:	<ul style="list-style-type: none">• CCU, camera head 3 m cable, Y/C cable, BNC cable, HDMI-DVI cable, HDMI cable, instructions

■ Digital Video Camera

Item	Item-No.
Full HD Cam Plus	10-0207-01



HIPP Full HD Cam

> *digital video camera.*



Product Profile

- Easy handling (no software required)
- Suitable for shift operation
- Suitable for the most diverse production areas
- Resistant to water and oil based cooling emulsion
- Robust design, closed system, no fans installed
- Suitable for pouring
- Image resolution 1920 x1080 pixels
- High quality workmanship - "Made in Germany"

Camera Head

Waterproof pushbutton, footswitch



- Weight
- 150 g
- Dimensions:
- L = 65 mm



HIPP Full HD Cam

>> *digital video camera.*

Technical Specifications

Camera head:	<ul style="list-style-type: none">• aspect ratio 16:9, resolution 1/3", retractable (with the attached cap)
Power consumption:	<ul style="list-style-type: none">• 100-240 V (25 VA)
Frequency:	<ul style="list-style-type: none">• 50-60 Hz
Geräteschutz:	<ul style="list-style-type: none">• 2 x T3, 15 A
Video system:	<ul style="list-style-type: none">• image resolution: Full HD 1920 x 1080• TV resolution: > 1000 lines• sensitivity: < 3 Lux (1/1.4)• automatic white balance• shutter speed: 1/50 (1/60) zu 1/100.000 sec.
Connection:	<ul style="list-style-type: none">• Video-out connection: 1 x HDMI
Other connections:	<ul style="list-style-type: none">• 1 x USB (A) (USB keyboard)• 1 x Remote IN (footswitch)• 1 x Remote OUT (Video printer, Video recorder, etc.)• 1 x RJ45 (service)
Safety class (similar IEC 60601-1):	<ul style="list-style-type: none">• I / BF
IP-Code:	<ul style="list-style-type: none">• 20
Standard:	<ul style="list-style-type: none">• IEC 60601-1-2
Classification (similar MDD 93/42/EEC):	<ul style="list-style-type: none">• I
Properties:	<ul style="list-style-type: none">• white balance, boost-function, menu• 3 user settings storable, 2.5 digital zoom• freeze-function, character generator
Dimensions (WxHxD):	<ul style="list-style-type: none">• 359.4 mm x 106.2 mm x 335.2 mm
Weight:	<ul style="list-style-type: none">• ca. 4.7 kg
Delivery:	<ul style="list-style-type: none">• CCU, camera head 3 m cable, main cable, HDMI-DVI-cable, HDMI-cable, instructions

Digital Video Camera

Item	Item-No.
Full HD Cam	10-2012-00



HIPP Eco Cam

>> *digital video camera.*



Product Profile

- Easy handling (no software required)
- Suitable for shift operation
- Suitable for the most diverse production areas
- Resistant to water and oil based cooling emulsion
- Robust design, closed system, no fans installed
- Suitable for pouring
- Image resolution 752 x 582 pixels
- High quality workmanship - "Made in Germany"

Camera Head



- Weight: • 80 g
Dimensions: • d= 29 mm; l= 55 mm



HIPP Eco Cam

>> *digital video camera.*

Technical Specifications

- Dimensions (WxHxD): • 355 x 103 x 253 mm
- Weight: • 4.4 kg
- Image sensor: • 1/3" CCD
- Resolution: • 752 x 582 pixel
- Function: • white balance
- Delivery: • CCU (Camera Control), camera head with 3 m cable, power cord, Y/C cable, BNC cable, instructions
- Camera head: • aspect ratio 4:3
• retractable (with the attached cap)
- System: • power supply: 100/240 VAC, 50-60 Hz
• fuses: 2 x, 5 x 20 mm, Verzögerung: 3.15 AH (I=1500A)
• power consumption: 20W
• TV resolution: >470 lines
• sensitivity: < 1 lux (1/1.4)
• shutter speed: PAL (NTSC): 1/50 (1/60) to 1/100.000 sec
- Video-out connection: • 2 x Video
• 2 x S-Video
• 1 x Y-Pb.Pr (Component)
• 1 x SDI
• 1 x USB 2.0
- Standard: • safety-class: I
• application part: type BF
• IEC 601-1, EN 60601-1; certifikate 93/42/EEC: I
- Video system: • PAL (or NTSC on request)

Digital Video Camera

Item	Item-No.
Eco Cam	10-2011-00



HIPP USB Cam

>> *digital video camera.*



Product Profile

- Requires PC and software for commissioning
- Resistant to water and oil based cooling emulsion
- Very small, compact and robust design
- Mobile camera system
- High quality workmanship - „Made in Germany“

User-friendliness through maximum benefit

- High-definition HD industrial video camera, 8 M pixel
- Universal USB 2 digital output for connection to PC and notebook
- Robust, industrial-grade housing
- Small and compact, outer diameter 24 mm
- Automatic exposure and color control
- Integrated micro-button for remote control of image storage
- Very simple and understandable software Intravision Capture
- Resolution quality of the camera selectable from 1280 x 720 pixels to 3264 x 2448 pixels
- Full HD resolution 1920 x 1080 with max. 25 frames / s (default)
- Max. Resolution 3264 x 2448 with max. 15 pictures / s



HIPP USB Cam

>> *digital video camera.*

Technical Specifications

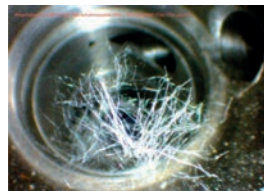
Image	1/3.2" CMOS / 4,57 (H) x 3,43 (V) mm
Resolutions	3264 (H) x 2448 (V) / max. 15 fps 2592 (H) x 1944 (V) / max. 20 fps 1920 (H) x 1080 (V) / max. 25 fps 1280 (H) x 720 (V) / max. 30 fps
Pixels	1.4 µm (H) x 1.4 µm (V)
Interface	USB 2.0
Min. Lumination	0,05 lux
Signal	34 dB
Dynamic	72.5 dB
Shutter	Auto (Electronic Rolling Shutter)
Synchronisation	intern
Control	Auto (0-12 dB)
White balance	Auto (2800° K - 6500° K)
Power Supply	5V DC / 175 mA, USB 2.0 interface
Connection	12-Pol Hirose, metal
Lens thread	C-Mount
Operating temperatur	-10 ° C bis +60 ° C
Dimensions/weight	D = 24 mm, L = 69 mm / 40 g without connection cable
Delivery	Camera, USB-connection cable, L = 1,8 m, software: Intravision Capture (DE/EN)
Equipment	C-Mount-Adapter, objektive



Software Intravision Capture



Saved image with the Resolution 2592 x 1944 pixels 5 MP



Saved image with the Resolution 2592 x 1944 Pixel 5 MP

Digital Video Camera

Item	Item-No.
USB Cam	HT-00026-30-ZU



HIPP TV Lenses / Adapter

>> camera adaptation.



Product Profile



- Allows the adaptation of a camera to all borescopes with DIN eyepiece funnel
- C-mount thread
- Focusable

User-friendliness through maximum benefit

- Practical snap closure
- Different focal lengths available
- Reflection reduction

TV Adapter

Item	Focal length [mm]	Item-No.
TV Adapter	14	HT-0014-TV-ZU
TV Adapter	18	HT-0018-TV-ZU
TV Adapter	20	HT-0020-TV-ZU
TV Adapter	22	HT-0022-TV-ZU
TV Adapter	25	HT-0025-TV-ZU
TV Adapter	28	HT-0028-TV-ZU
TV Adapter	32	HT-0032-TV-ZU
TV Adapter	35	HT-0035-TV-ZU
Zoom/TV Adapter	18-35	HT-ZOOM-TV-ZU

HIPP Accessories

>> *your notes.*

Your Notes



HIPP Endoskop Service GmbH

>> *your requirements are our aims.*

HIPP Accessories



Image Processing



HIPP Endoskop Service GmbH
Glottertalstrasse 10
79108 Freiburg / Germany
Telephone: +49 (0) 761 / 52800
Telefax: +49 (0) 761 / 52855
E-Mail: info@hipp-es.com
Internet: www.hipp-es.com

